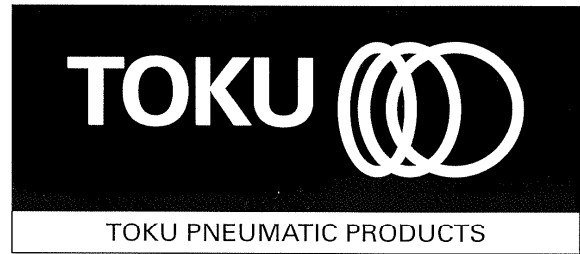
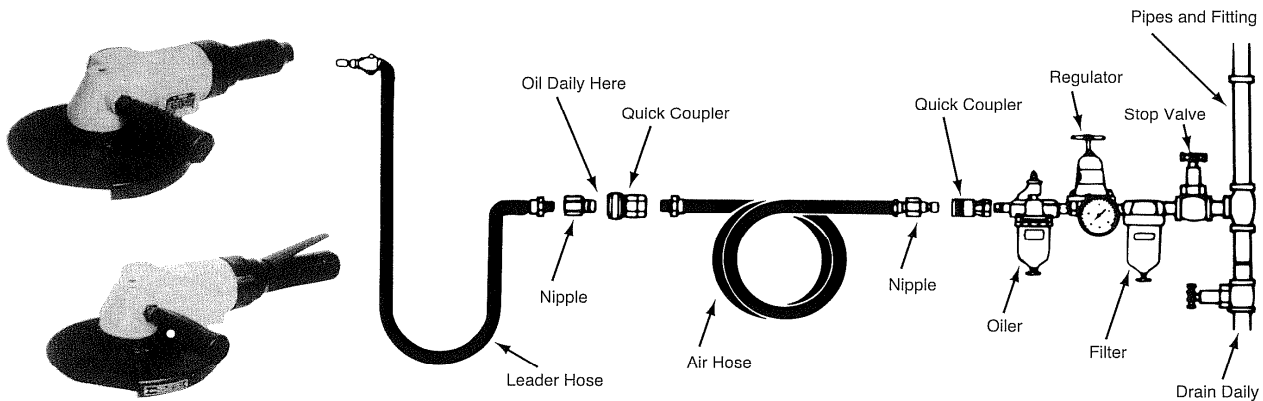


# MAINTENANCE INSTRUCTIONS AIR ANGLE GRINDER MODEL TAG-700 TAG-700QJL TAG-900QJL



[www.air-allied.com.au](http://www.air-allied.com.au)

## AIR HOSE AND HOSE CONNECTION:



## OPERATING INSTRUCTIONS

### “WARNING”

1. ALWAYS USE APPROVED EYE PROTECTION WHEN OPERATING THIS TOOL.
2. ALWAYS DIRECT EXHAUST AWAY FROM YOURSELF AND OTHERS IN THE TOOL.
3. DAILY – BEFORE USING TOOL, WITH NO WHEEL, CHECK SPINDLE SPEED. NEVER OPERATE FASTER THAN RATED SPEED.
4. ALWAYS USE ACCESSORIES IN GOOD CONDITION RATED AT OR ABOVE SPINDLE SPEED. TIGHTEN SPINDLE ATTACHMENTS SECURELY.
5. ALWAYS USE APPROVED DUST MASK.
6. ALWAYS DISCONNECT TOOL, WHEN NOT IN USE.

### LUBRICATION

To flush out gum and dirt :

1. Daily before and after each shift, pour a liberal quantity of gum solvent oil into air line.
2. Connect tool to air line. Operate tool.
3. Repeat procedure before storing.
4. Monthly, check oil in impact unit, This tool holds approximately 1/3 oz. of SAE # 30 oil.

### AIR SUPPLY (minimum requirements)

1. Compressor/10hp,40CFM at 90 psig (6.2bar),40 air tank.
2. (See diagram above for Pipe, Hose and Fitting size.)
3. When using two or more hoses, all except leader hose should be 1/2" I.D. or larger.

FOR BEST OPERATION: Supply tool with 90psig (6.2bar) of clean, dry air. Higher pressure drastically reduces tool life and can void warranty.

### LOSS OF POWER/ERRATIC ACTION (possible causes)

1. Reduced compressor output.
2. Excessive drain on air line.
3. Moisture or restricted pipe, hose or fittings.
4. Improper size or poor condition of pipe, hose or fittings
5. Dirt or gum deposits cut tool power. To correct this, check and clean air strainer, then repeat lubrication procedure. (If outside conditions are in order, disassemble tool, replace worn or damaged parts, clean, assemble and lubricate.)

### REPLACEMENT PARTS

Always use GENUINE TOKU TOOLS Replacement Parts. When replacement parts are required, order by Part No. and Description in the Parts List.

### SOUND LEVEL

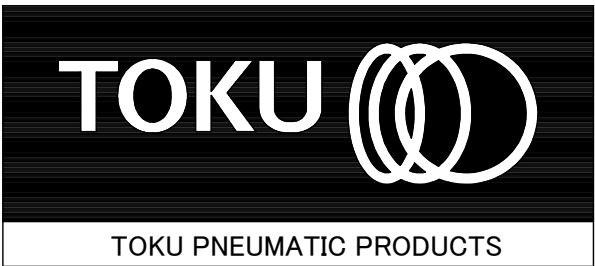
Sound Level dB(A) in accordance with ISO15744

	TAG-700	TAG-700QJL	TAG-900QJL
Pressure(No-Load)	86.7	86.7	86.7
Power(No-Load)	97.7	97.7	97.7

No.10 12-06

# MAINTENANCE INSTRUCTIONS

## AIR ANGLE GRINDER



# MODEL TAG-700

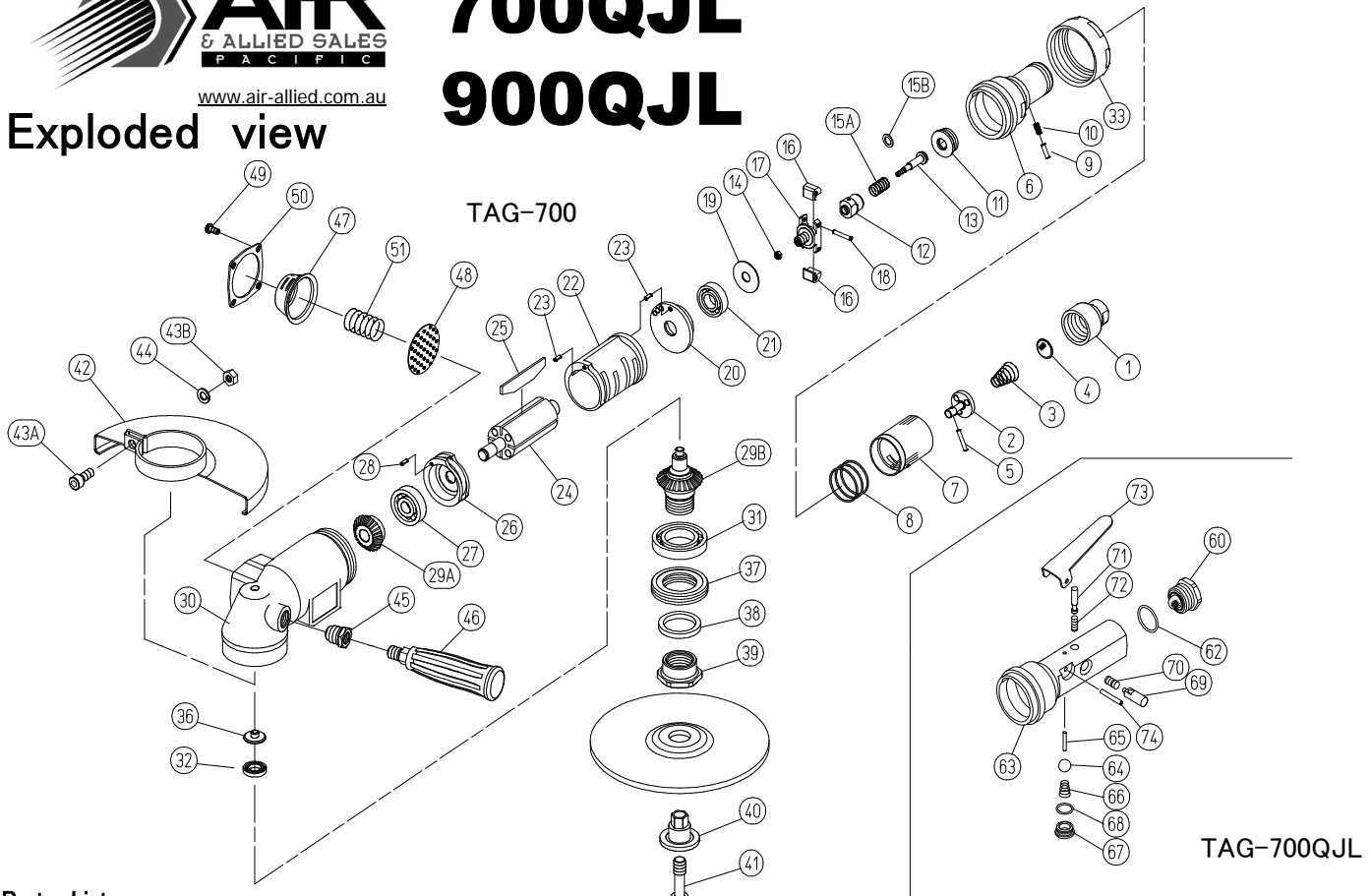
# 700QJL

# 900QJL



www.air-allied.com.au

### Exploded view



### Parts List

Symbol No.	Parts No.	Q'ty Req.			Description	Symbol No.	Parts No.	Q'ty Req.			Description
		700	700QJL	900QJL				700	700QJL	900QJL	
001	420417B80	1	—	—	036	420417N00	1	1	1	Upper Cap	
002	420411B00	1	—	—	037	420417G10	1	1	1	Bearing Nut	
003	130802117	1	—	—	038	136302108	1	1	1	Felt	
004	136802010	1	—	—	039	420417H50	1	1	1	Wheel Carrier	
005	130402107	1	—	—	040	420417H00	1	—	—	Wheel Ring	
006	420417A10	1	—	—		420423H00	—	1	1	Wheel Ring	
007	420417B30	1	—	—	041	420417N10	1	1	1	Set Screw	
008	130802118	1	—	—	042	420423U00	1	1	—	Wheel Cover (7")	
009	130402103	1	—	—		420427U00	—	—	1	Wheel Cover (9")	
010	130802122	1	—	—	043A	131708020	1	1	1	Hex. Bolt MSX20	
011	420417M30	1	1	1	043B	134401008	1	1	1	Hex. Nut M8	
012	420411L60	1	1	1	044	131301008	1	1	1	Spring Washer M8	
013	420411L70	1	1	1	045	420406A20	1	1	1	Case Bush	
014	134401004	1	1	1	046	420417N20	1	1	1	Dead Handle	
015A	130802126	1	—	—	047	420417W10	1	1	1	Muffler Hat	
	130802125	—	1	—	048	137402002	1	1	1	Muffler Screen	
	130802204	—	—	1	049	132405010	4	4	4	Screw M5X10	
015B	131402007	2or3	7or8	0or1	050	420417W20	1	1	1	Muffler Flange	
016	420411L90	2	2	2	051	130802119	1	1	1	Muffler Spring	
017	420411M00	1	1	1	060	420420N5B	—	1	1	Air Inlet CP	
018	130603122	2	2	2	062	131103019	—	1	1	O Ring S-24	
019	420417M10	1	1	1	063	420422C00	—	1	1	Valve Body	
020	420417C80	1	1	1	064	130505112	—	1	1	Rubber Ball M12	
021	130104103	1	1	1	065	130402125	—	1	1	Valve Pin	
022	420417D50	1	1	1	066	130802202	—	1	1	Valve Spring	
023	130603008	2	2	2	067	420420B40	—	1	1	Valve Cap	
024	420417E00	1	1	1	068	131103012	—	1	1	O-Ring S-14	
025	137101026	4	4	4	069	420420D00	—	1	1	Push Button	
026	420418E80	1	1	1	070	130802144	—	1	1	Push Button Spring	
027	130110002	1	1	1	071	420420C20	—	1	1	Lock Pin	
028	130603008	1	1	1	072	130802143	—	1	1	Lock Spring	
029	420417M5C	1	1	1	073	420210VH0	—	1	1	Valve Lever	
029A	—	1	1	1	074	130604028	—	1	1	Spring Pin	
029B	—	1	1	1							
030	420418A00	1	1	1							
031	130116106	1	1	1	001	420418580	1	—	—	Throttle Valve Cover NPT	
032	130101008	1	1	1		420417H50S	1	1	1	SAA Code Backing Flange	
033	420417A50	1	1	1		42040320B	1	1	1	Anti-Vibration Dead Handle	